

Subsurface and Groundwater Systems

Hanneke van der Klis

Geo-engineering

Simone van Schijndel

Hydraulic Engineering

Wiel Tilmans

Marine and Coastal Systems

Frank Hoozemans

Inland Water Systems

Gerard Blom

Deltares Software Centre

Jan Aart van Twillert

Jan Aart van Twillert

**Flood risk**

Harm Duel

**Ecosystems and environmental quality**

Hans Vissers

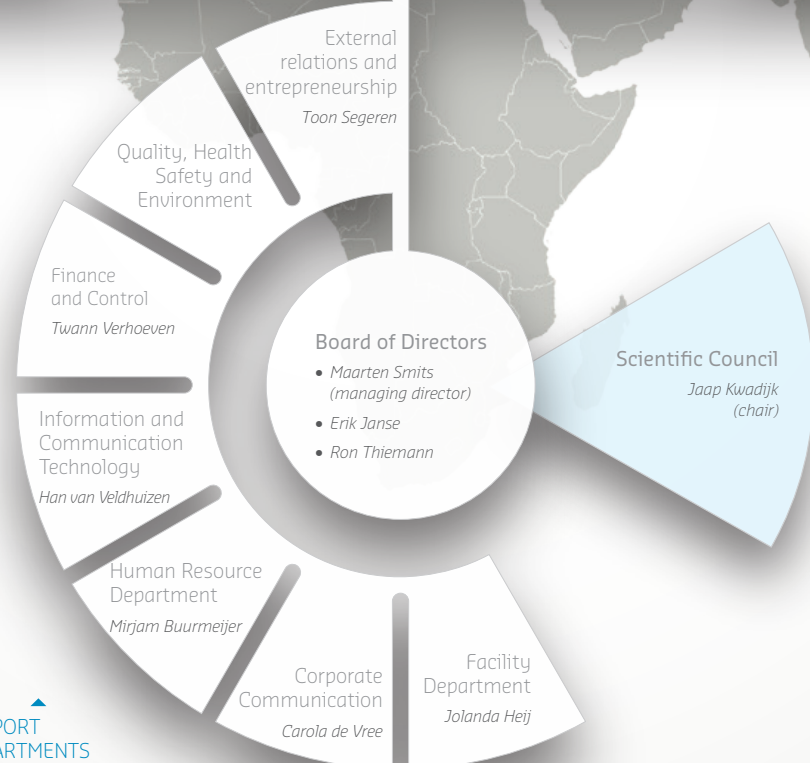
**Water and subsoil resources**

Peter van den Berg

**Delta infrastructure**

Henriëtte Otter

**Sustainable delta planning**



SUPPORT DEPARTMENTS

### Subsurface and Groundwater Systems

*Hanneke van der Klis*

- Groundwater Management  
*Marijn Kuijper*
- Subsurface and Groundwater Quality  
*Hilde Passier*
- Applied Geology and Geophysics  
*Renée Talens*
- Urban Water and Subsurface  
*Henriëtte Otter*

### Geo-engineering

*Simone van Schijndel*

- Dike Safety  
*Maya Sule*
- Dike Technology  
*Leo Voogt*
- Transport Infrastructure  
*Joris van Ruijven*
- Soil and Structures  
*Harm Aantjes*

### Hydraulic Engineering

*Wiel Tilmans*

- Harbour, Coastal and Offshore Engineering  
*Klaas Jan Bos*
- Coastal Structures and Waves  
*Marcel van Gent*
- Industrial Hydrodynamics for Infrastructure & Industry  
*Bas van Vossen*
- Experimental Facility Support  
*Arjan Wijdeveld*

### Marine and Coastal Systems

*Frank Hoozemans*

- Marine and Coastal Information Science  
*Annette Zijdeveld*
- Ecosystems & Sediment Dynamics  
*Ankie Bruens*
- Applied Morphodynamics  
*Dirk-Jan Walstra*
- Marine and Coastal Management  
*Sharon Tatman*
- Environmental Hydrodynamics  
*Bianca Peters*

### Inland Water Systems

*Gerard Blom*

- Freshwater Ecology and Water Quality  
*Sacha de Rijk*
- River Dynamics and Inland Shipping  
*Johan Boon*
- Catchment and Urban Hydrology  
*Lucas Janssen*
- Flood Risk Management  
*Annemargreet de Leeuw*
- Operational Water Management & Early Warning  
*Nadine Slootjes*
- Water Resources & Delta Management  
*Harm Duel*

### Deltaes Software Centre

*Jan Aart van Twillert*

- Software, Data management and Innovation  
*Gerard van der Kolff*
- Product Development and Services  
*Joost Icke*
- Numerical Simulation Software  
*Arthur Baart*

### MAILING ADDRESSES

- P.O. Box 177  
2600 MH Delft  
The Netherlands
- P.O. Box 85467  
3508 AL Utrecht  
The Netherlands

### VISITING ADDRESSES

- Boussinesqweg 1  
2629 HV Delft, The Netherlands  
T +31 (0)88 335 82 73
- Daltonlaan 600  
3584 BC Utrecht, The Netherlands  
T +31 (0)88 335 77 75
- Utrecht Castel  
Princetonlaan 8  
3584 CB Utrecht, The Netherlands  
T +31 (0)88 622 78 60

### EMAIL

[info@deltares.nl](mailto:info@deltares.nl)

### WEBSITE

[www.deltares.nl](http://www.deltares.nl)